

SABRIA AUDIO®

DUAL PRE

USER MANUAL



MICROPHONE - INSTRUMENT - DI BOX
TWO-CHANNELS PREAMP



Table of contents

- Dual Pre | Introductionp.4

- Conditions of use | Installationp.5

Section A - FRONT PANEL FEATURESp.6

Section B - REAR PANEL FEATURESp.9

Section C - SPECIFICATIONSp.11

Section D - AUDIO CONFIGURATIONSp.12

Section E - ACCESSORIESp.14





DUAL PRE

INTRODUCTION

Two-channels Preamp microphone | Instrument | DI Box

The Dual Pre is a two-channels preamp and if we had to summarize it in a few words, it would be: precise, transparent & pure. All signal paths are processed with optimal accuracy and reveal all the natural skills of your sound sources whether for microphones or hi-z instruments, with a specific versatility.

As a two-channels preamp, its high definition sound, the Dual Pre is a valuable asset to any musician or sound engineer who's searching for a pure musical recordings.

THANKS FOR PUTTING YOUR TRUST AND CONFIDENCE IN SABRIA-AUDIO.



CONDITIONS OF USE | INSTALLATION

IMPORTANT SAFETY INSTRUCTIONS

- 1- Do not use this unit near water.
- 2- Clean only with a dry cloth.
- 3- Do not install near any heat sources such as radiators, heat registers, stoves, or other units that produce heat.
- 4- Do not defeat the safety purpose of the polarized or grounding-type plug. A polarized plug has two blades with one wider than the other. A grounding type plug has two blades and a third grounding prong. Only use the power supply unit provided by Sabria-Audio.
- 5- Protect the power cord from being walked on or squashed particularly on plugs, convenience receptacles, and the point where they exit from the unit.
- 6- Only use attachments/accessories specified by the manufacturer.
- 7- Unplug this apparatus during lightning storms or when unused for long periods of time.
- 8- Refer all servicing to qualified service personnel. Servicing is required when the unit has been damaged in any way, such as power-supply cord or the plug is damaged, liquid has been spilt or objects have fallen into the unit, the unit has been exposed to rain or moisture, does not operate normally, or has been dropped.

• **WARNING ELECTRIC SHOCK HAZARD** Only authorized personnel can service this equipment.

• **This unit should be connected to a mains socket outlet with a protective earthing connection.**

- Mains powered units should not be exposed to dripping or splashing. No objects filled with liquids, such as vases or drinking glasses, should be placed on the unit.
- Turning off the power switch does not completely isolate this product from the power line.
- Keep the power plug easily accessible. Do not install this equipment far from a power outlet and/or power strip.
- Do not install this equipment in a confined space such as a box for conveyance or similar unit.
- The ventilation should not be impeded by covering the ventilation openings with items, such as newspapers, table-cloths, curtains, etc.
- No naked flame sources, such as lighted candles, should be placed on the unit.
- The rating label is located on the back of the unit.
- The provided power supply complies with all European, Us and Japanese standards.

SABRIA-AUDIO Warranty: 3 years. (Check the warranty policy at Sabria-Audio.com)



Section A - Front panel features



1A & 1B - Inputs Select | Mic / Inst (2-pos switch)

The input selector permits select the incoming signal. The yellow LED indicates the preamp is in the Mic position. In the second position, the instrument input is activated.

2A & 2B - Phantom Power +48V NA/Active with red LED (2-pos switch)

The phantom power is required with all condenser microphones. However, some of them will have its dedicated external power supply. In this case, you don't have to activate it on the Source Preamp. Dynamic microphones do not require phantom power.

Check the user guide or contact the manufacturer concerning any equipment you are connecting if you are not sure if it will be damaged by the phantom power.

Connect your microphone first, with the gain at the minimum. Then you can activate the phantom power and adjust the gain.



3A & 3B - Jack entry instrument Hi-Z Neutrik Input | Neutrik Jack 6.35mm Instruments types
Accepts all passive or active Hi-Z unbalanced (asymmetric) inputs like guitars, electric pianos, synths, etc. Gain: 13dB to 40dB.

4A & 4B - Bargraph | Optimal 4-LED level indicator

Yellow SIG LED for signal presence level, green -10dB LED, green 0dB LED, OL (Overload) red LED +3dB.

To adjust the perfect gain and ensure an optimized circuitry work, the two green LEDs have to be active and the red one blinking.

NOTICE: The OL red LED is NOT an absolute limit, and has its electronic and measure coherence but works like an indicator of a +4dBu level. The Dual Pre electronics tolerance is made to absorb and magnify harmonically the input source to go above the +4dBu level so if the right OL LED is blinking, only your hearing has to detect the right and critical point.

5A & 5B - Phase Invert NA/Active with red LED (2-pos switch) Latus

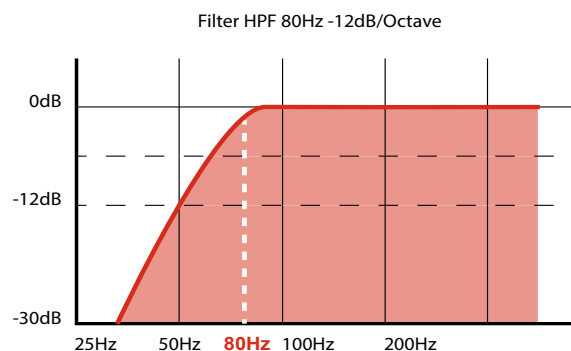
This device inverts the polarity of a signal will swap positive voltage to negative voltage and vice versa. The Phase Invert permits a 180° phase inversion.

6A & 6B - Pad -20dB NA/Active with red LED (2-pos switch)

The -20dB pad works as an attenuator and operates on Mic and Instrument inputs. If you have a really loud source, to better adjust the gain without peaking, the pad will be the solution.

7A & 7B - Hi-pass Filter 80Hz with red LED (2-pos switch).

The high-pass filter attenuates content below a cutoff frequency, allowing higher frequencies to pass through the filter. In this case, the cutoff frequencies have a 12dB slope. It's a rumble filter.



**8A & 8B** - Gain potentiometers

With two dB scales, one for the microphone (33dB to 60dB) input and the other one (13dB to 40dB) for Instruments input (HiZ).

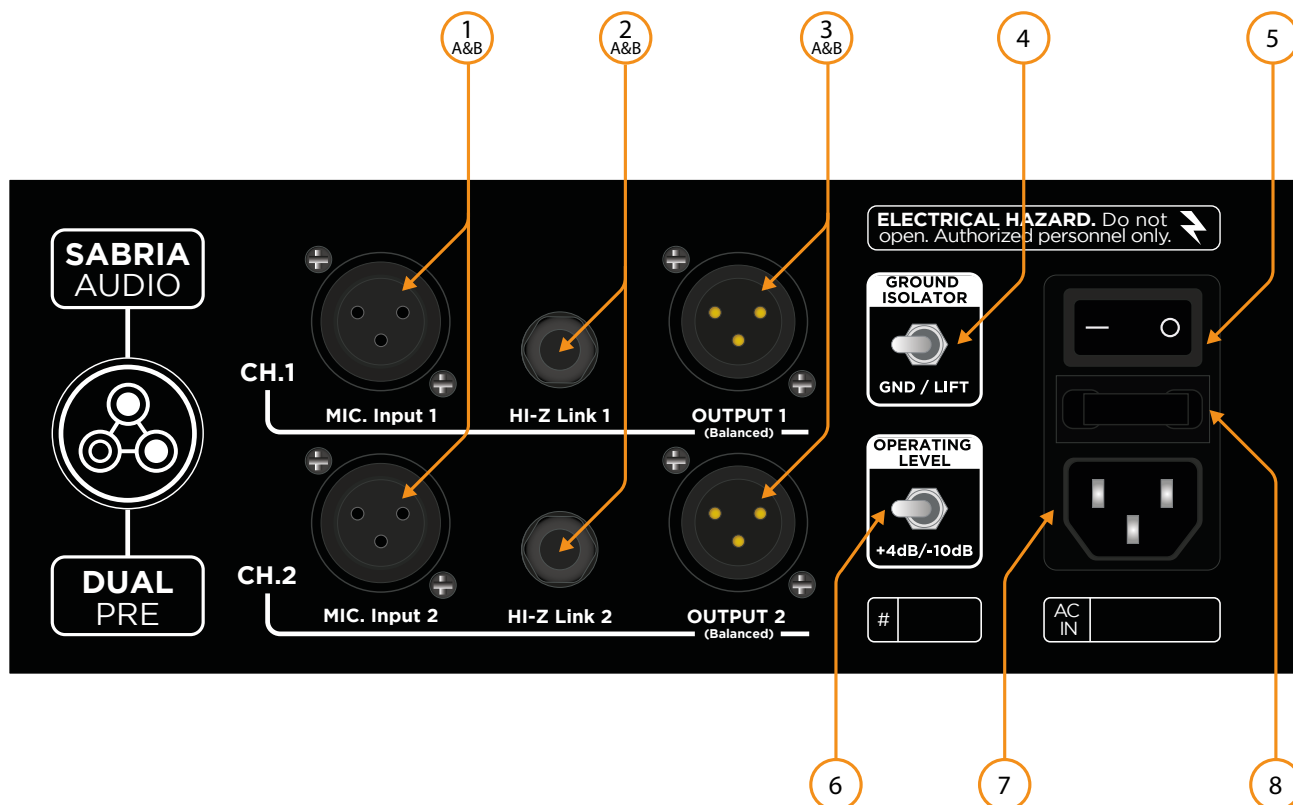
9 - Power Supply indicator with LED.

The red ON LED indicates that the Dual Pre is powered on.

THE DUAL PRE'S GAIN CONTROL IS MADE TO OPTIMIZE FULLY THE OPERATING LEVEL OF ITS CIRCUITRY, REVEALS TOTALLY YOUR INPUT SOURCE AND AT THE END PROVIDES YOU WITH COMPLETE TECHNICAL COHERENCE.



Section B - Rear panel features



1 A&B - Microphone Input Xlr Neutrik

On this panel, a Mic Input has been added as a duplicated input. Be sure to connect one or other mic input.

It accepts all types of microphones, condenser, dynamic, ribbon, etc.

Check the user guide or contact the manufacturer of any equipment you are connecting.

2 A&B - Hi-Z Link | Jack 6,35mm Neutrik

The Hi-Z link is a parallel circuit from the front panel Instrument input. It reproduces exactly the incoming signal to feed an instrument amp, or tuner for example. See Section D - Audio configurations.

3 A&B - Main Outputs Xlr Neutrik

Balanced 600 Ohms main outputs.

**4 - Ground Lift 2-pos switch NA/Gnd Lift**

Additional equipment and even the environment can add hums and noise due to ground-to-balanced signals. The "lift" position disconnects the audio ground from the earth ground and avoids the ground noise, commonly in live conditions.

5 - On/Off switch

Powers the Source Preamp. Internal toroidal transformer 100V-230V AC supply.

6 - Main Output +4db/-10dB selector

The +4db/-10dB is the operating level of the balanced Output. The rule to optimize the audio results is to adapt all the audio chain to one or another level. Check the main characteristics of your equipment (audio interfaces, mixers, powered speakers). It's technically important to adjust it to have a coherent chain. This selector is common for the two channels.

7 - IEC Cable

The Source Preamp IEC power supply is available in three configurations: European 230V, America 120V and Japan 100V. with the adapted IEC cable plug.

8 - Fuse

The characteristics of this fuse are: 1AT (T for temporized)



Section C - Specifications

- Bandwidth @ -0.5dB | Mic In: 9Hz to 28kHz | Hi-Z In: 12Hz to 20kHz
- Bandwidth @ -3dB | Mic In: 3Hz to 62kHz | Hi-Z In: 4Hz to 38kHz
- Max. Level out (600Ω load): 8V / 20.4dBu
- Max Input | Mic In: 185mV | Hi-Z In: 1V9
- Max Input with Pad | Mic In: 327mV | Hi-Z In: > 7V
- Max. Total gain (600Ω load) | Mic: 59dB | Hi-Z: 40dB
- Inputs impedance | Mic: 4.2 kΩ | Hi-Z: 510kΩ
- Hpf (Hipass filter): -3dB @ 80Hz
- Bargraph: Yellow (Signal) -30dB / Green#1 -10dB / Green#2 -2dB / Red (OL) +4dB @1kHz

AC Power: 115v-230V (Toroidal transformer)

Fuse (Temporized): 1AT

Dimensions: 222 mm (W) x 335 mm (D) x 88 mm (H)

Weight: 3.7 kg

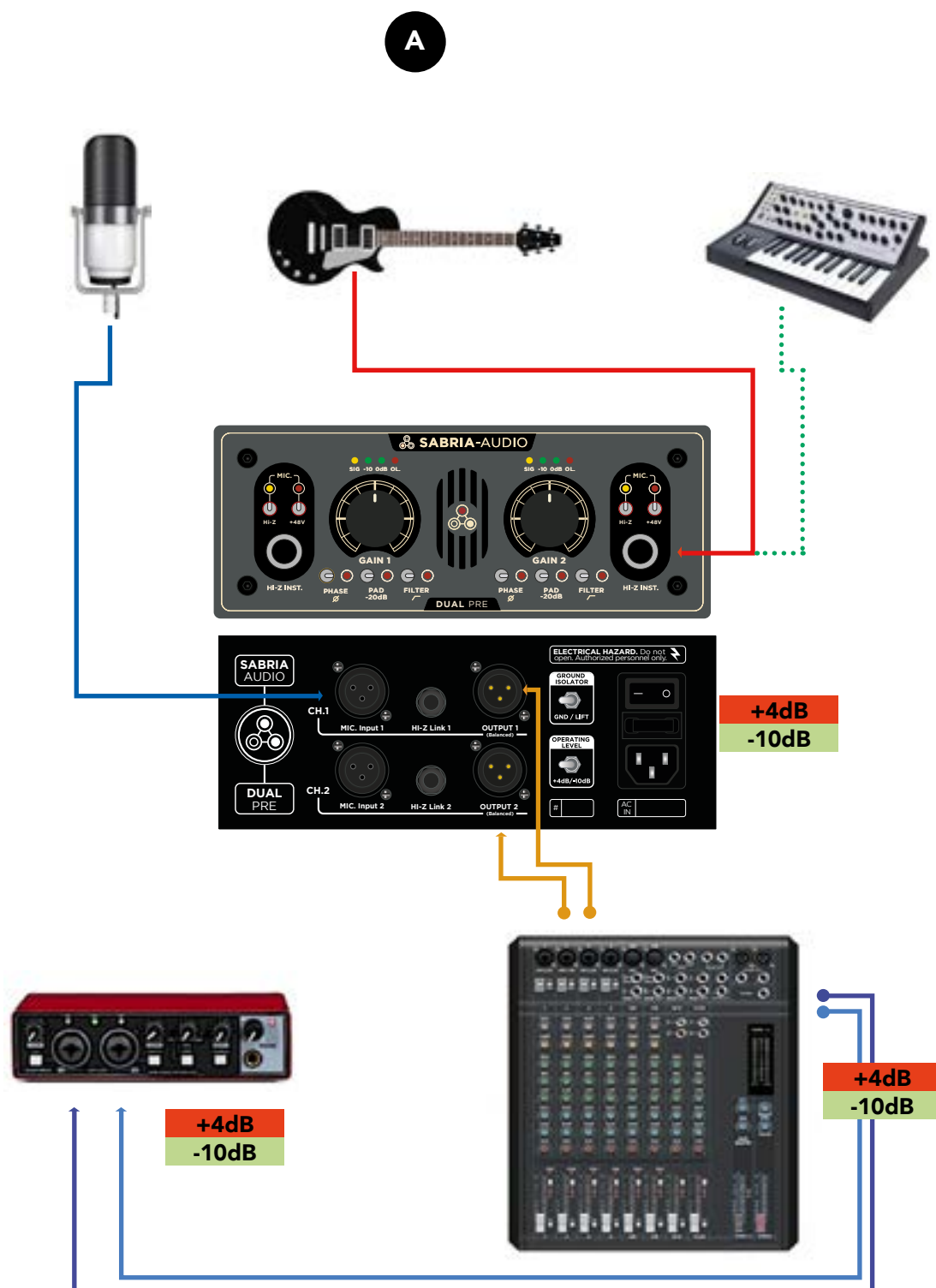
Section D - Content

Dual Preamp

IEC Cable

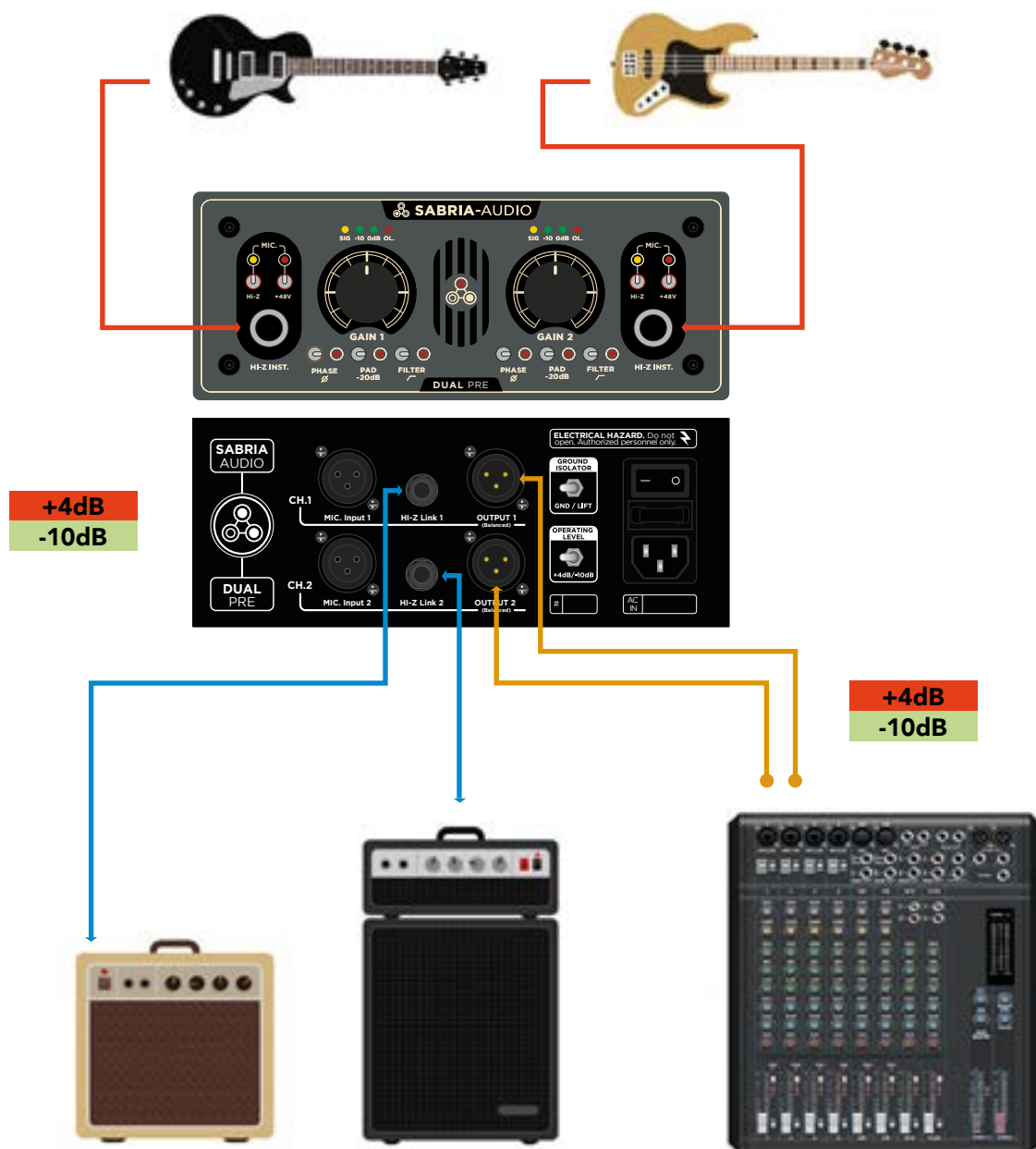


Section D - Audio Configurations (Examples)





B



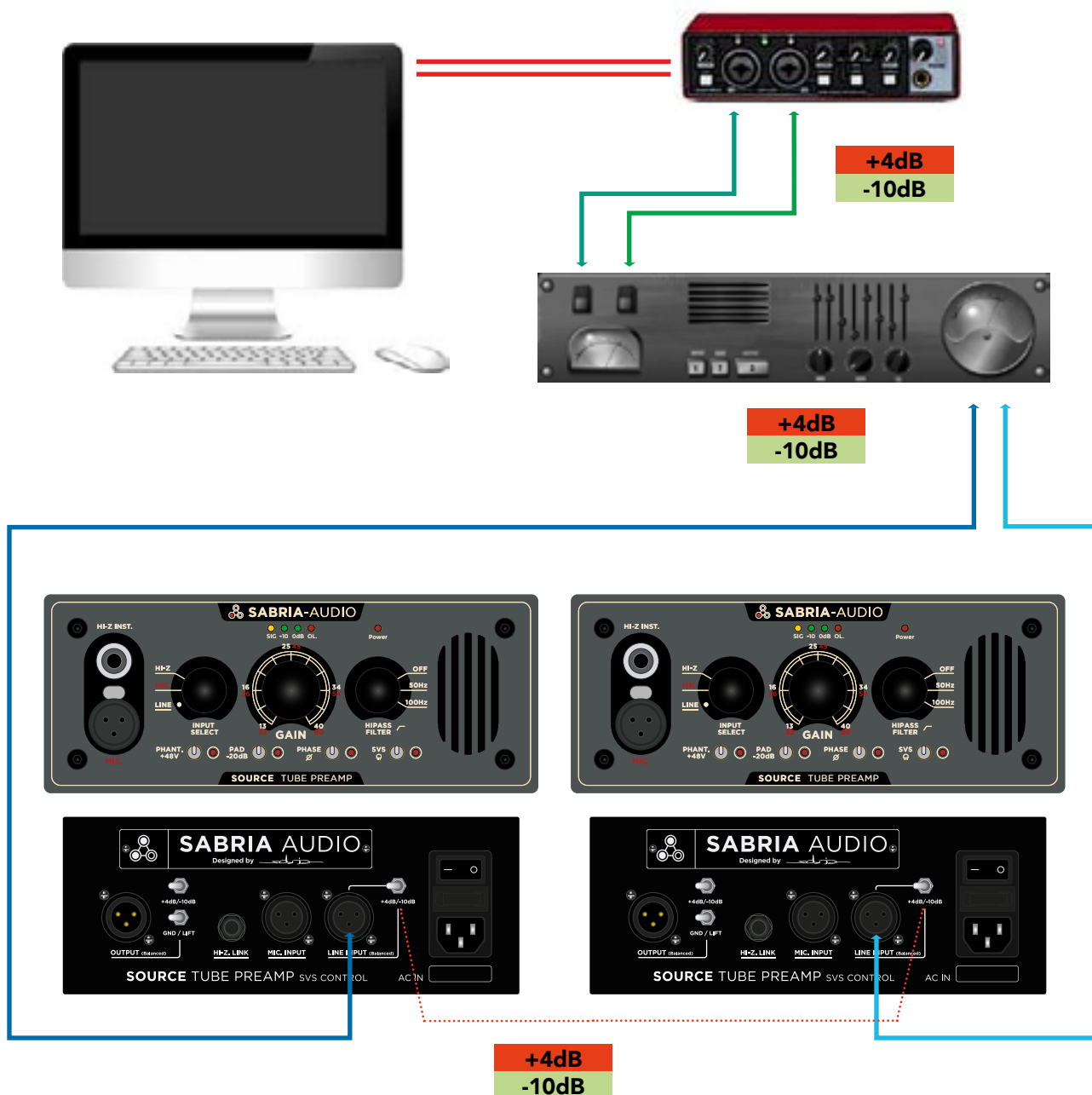


C





D





Section E - Accessories (Check it on www.sabria-audio.com)

P-RACK ONE

The P-Rack One 19-inch mounting kit contains two equal steel ears to rack one Dual Pre in all 19-inch standard racks. Furthermore, it's suitable with recording studios and all racks on the market and its solidity adapts to studio and live conditions of use.

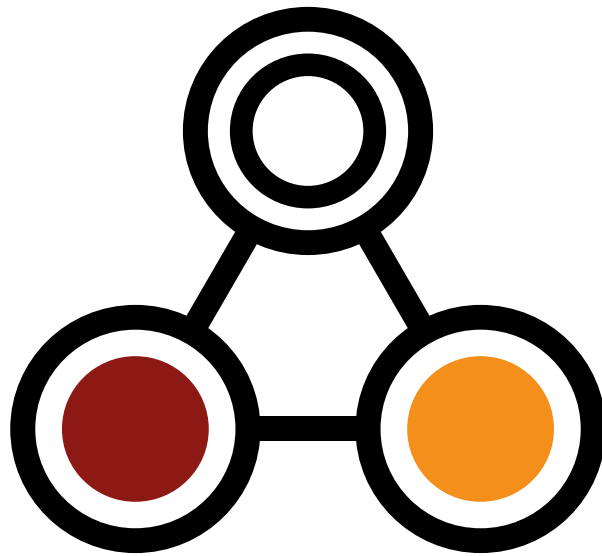


P-RACK TWO

The P-Rack Two 19-inch mounting kit contains two steel ears and two steel plates and all the necessary screws to join two Dual Pre units, and fits all 19-inch standard racks. Furthermore, it's suitable with recording studios and all racks on the market and its solidity adapts to live conditions of use.







SABRIA AUDIO.®

CREATE | RE-CREATE

Check our website
SABRIA-AUDIO.COM